

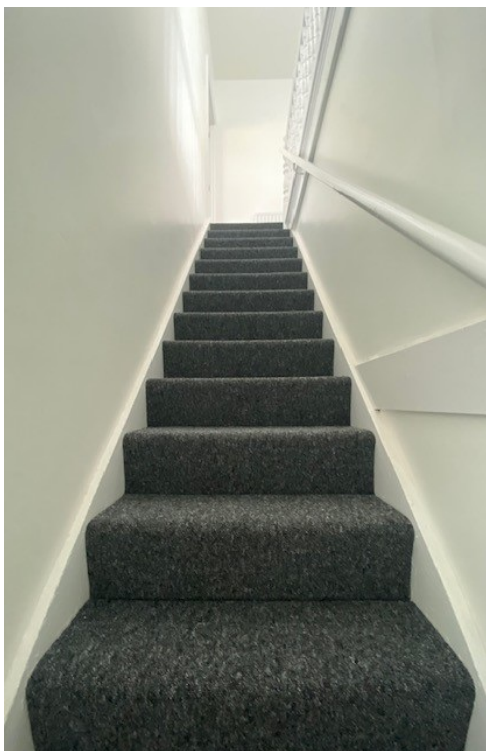
35 Jersey Road, Ilford, Essex, IG1

3 Bedroom Terraced House for Sale

£430000.00



FOR SALE



-  3 Bedrooms
-  2 Bathrooms
-  2 Reception Rooms

Features

- Double Glazing
- Central Heating
- Off-Street Parking
- Private Garden
- Recently Refurbished
- Close to Transport Links

Description

A unique opportunity has arisen to purchase this impressive, newly refurbished, 3 / 4 bedroom terraced house situated at the heart of Ilford. At ground floor level the accommodation comprises two generously sized reception areas, one W/C and a kitchen, leading to a private garden. To the first floor there are three bedrooms and a bathroom suite. There is a driveway to the the front of the property for up to two cars.

The property is half a mile away from Ilford Station which is subject to the new Cross Rail Scheme, ideal for transport to Central London and for those who commute to work. Ilford Lane, a popular high street, is a stone's throw away where all local amenities can be found, hosting a number of established restaurants/takeaways, Asian clothing shops, places of worship and small plaza units.

Viewings are strongly advised.

35 Jersey Road, Ilford, Essex, IG1

3 Bedroom Terraced House for Sale

£430000.00



FOR SALE



Commercial Residential Sale Lettings Management

